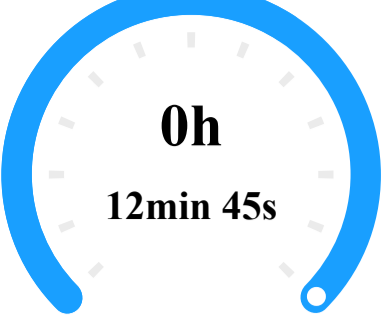


DJI Terra Quality Report

V5.0.2 | 2025-10-06 12:07 | Mission: 2024-12-09_SanderL2

Quality Report for LiDAR Point Cloud Processing

Aircraft Data Collection Time

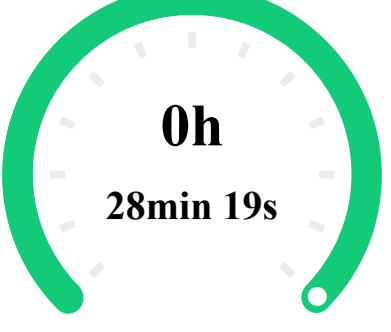


0h
12min 45s

POS Data Collection Time
12min 45s

Point Cloud Data Collection Time
11min 9s

Software Processing Time



0h
28min 19s

Point Cloud Optimization Time

- Point Cloud Accuracy Optimization Time: 3min 2s
- Smoothing Point Cloud Time: 2min 54s
- Point Cloud Colorization Time: 46s
- Merging Output Time: 2s
- Output Saving Time: 2min 4s
- Others: 7min 42s

ZD Map Generation Time: 3min 52s

Ground Point Classification Time: 3min 52s

DEM Generation Time: 4min 5s

Reconstruction Parameters

Point Cloud Optimization Parameters

Use custom base station data	No
Scenario	Point Cloud Processing
Point Cloud Density (By Percentage)	High(100%)
Point Cloud Effective Distance Range	3-300 m
Accuracy Control and Check	No
Optimize Point Cloud Accuracy	Yes
Smooth Point Cloud	Yes

Point Cloud Output Parameters

Point Cloud Format	PNIS LAS
Merged Output	Yes
LiDAR Point Cloud Block Count	1
2D Map	Yes
2D Map Parameters	Resolution (Custom) 2 cm/px
Ground Point Classification	Yes
Ground Point Classification Parameters	Gentle Slope Building Max Diagonal 20m Iteration Angle 6° Iteration Distance 0.5m
DEM	Yes
DEM Parameters	Size (GSD) 0.1m/px
Contour	No
Output Coordinate System	ETRS89 / UTM zone 32N NN2000 height

Mission Parameters

Aircraft Parameters (Aircraft 1)

Hardware Parameters

Payload	DJI Zenmuse L2
Payload SN	613D1.BR004155Y
LiDAR Parameters	https://enterprise.dji.com/zenmuse-l2/specs

LiDAR and IMU Calibration Parameters

Parameters	X	Y	Z	roll	pitch	yaw
Default	0.02667m	0.0145m	-0.04615m	-3.1377091 rad	0.0028995 rad	0.0048439 rad

Flight Parameters (1 Flights)

Average Flight Speed	5.01m/s
Flight Height	74.13m
Ground Beam Diameter	88mm*29mm
FOV	70°~75°
Pulse Rate	240kHz
Scan Rate	1200kHz
Scan Mode	Non-repetitive

System Parameters

CPU	AMD Ryzen 9 7950X 16-Core Processor 32 cores
GPU Count	1
GPU 0	NVIDIA GeForce RTX 4080 SUPER
RAM	120198 M

Accuracy Parameters

POS Status

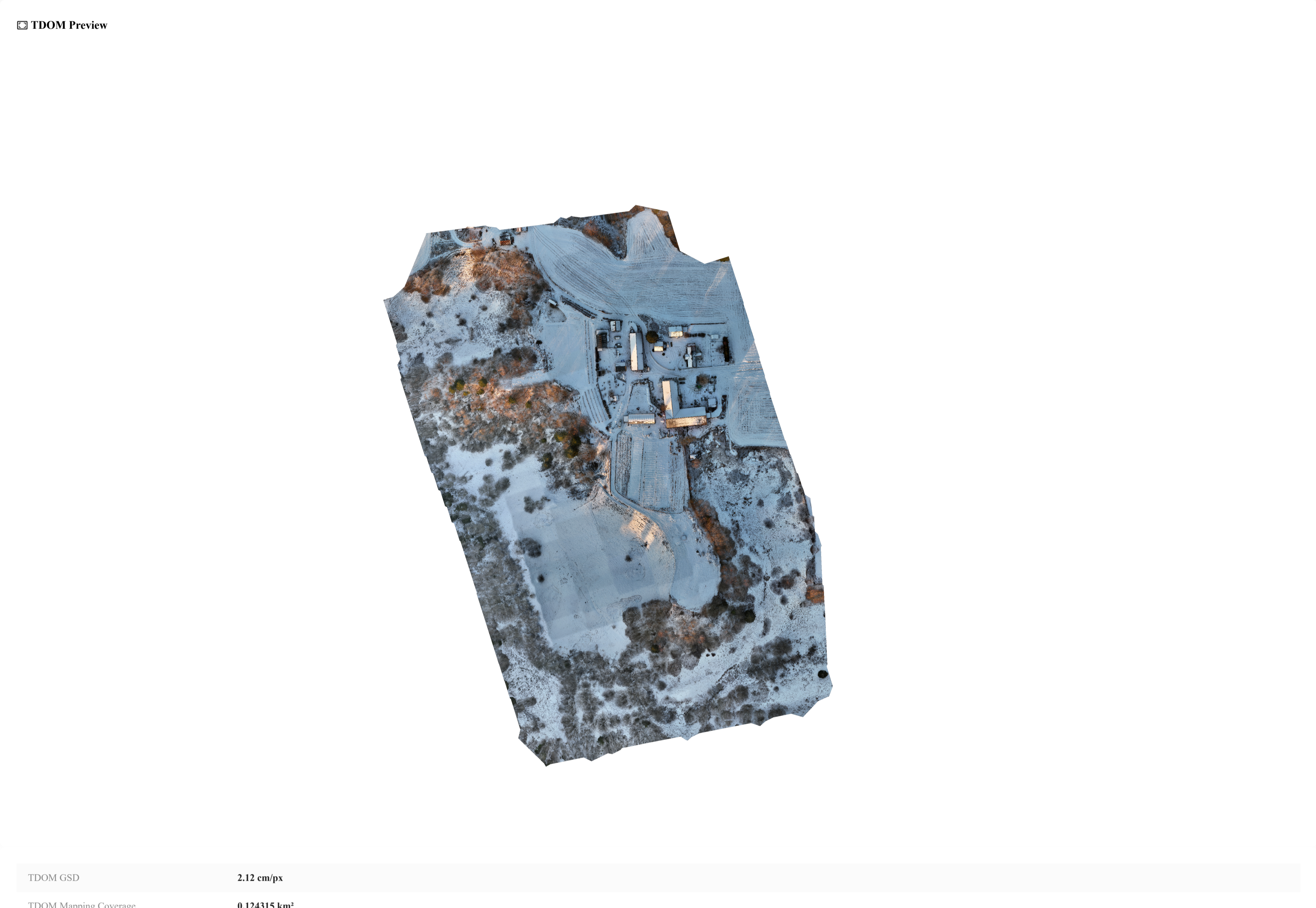
Fix	100.00%
Other	0.00%

IMU Trajectory Error

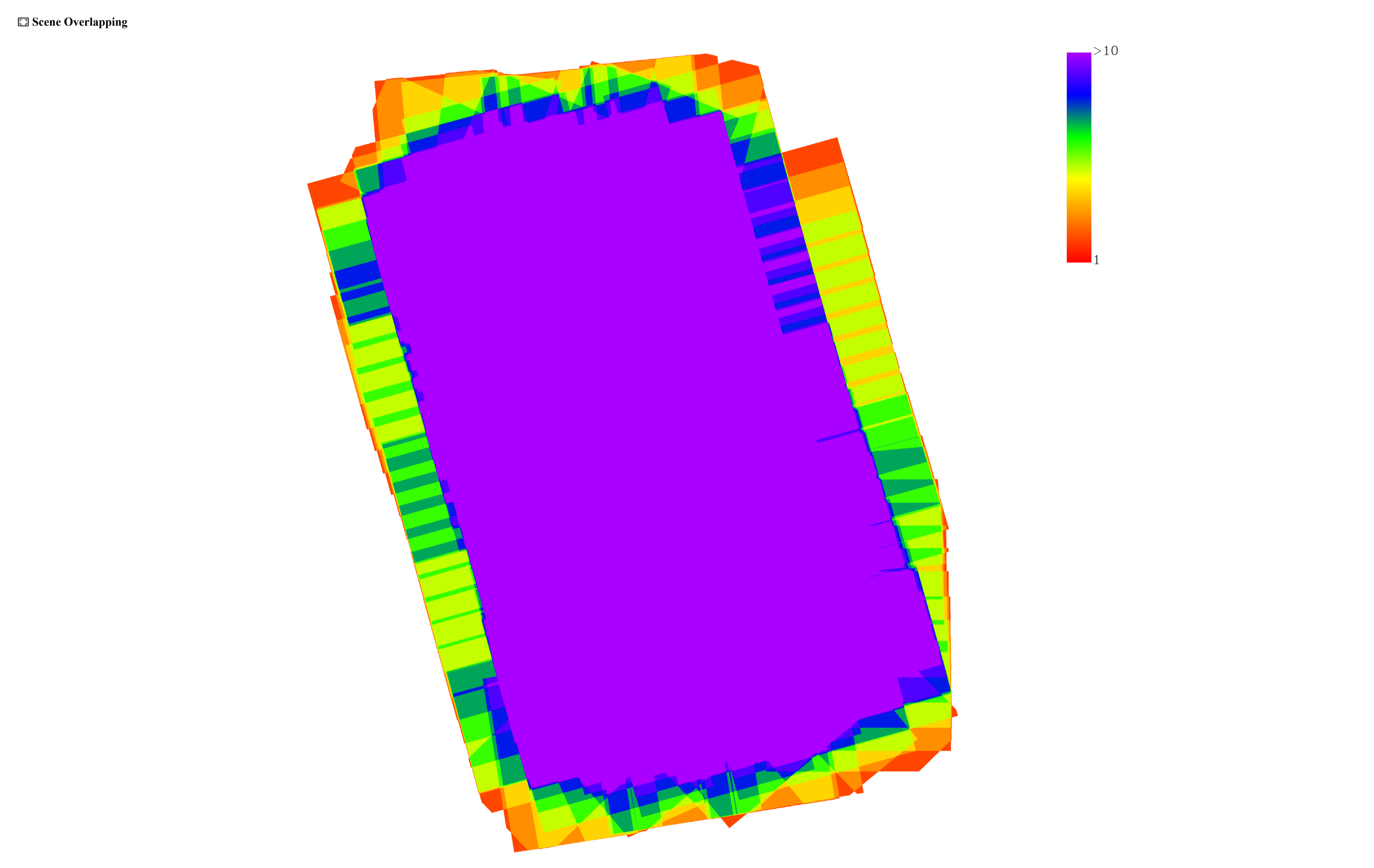
Parameters	X(E) RMSE	Average X(E)	Y(N) RMSE	Average Y(N)	Z(U) RMSE	Average Z(U)
Location	0.0001 m	0.0063 m	0.00007 m	0.00512 m	0.00009 m	0.00664 m
Attitude	0.0000018 rad	0.0000626 rad	0.0000038 rad	0.0000645 rad	0.0000249 rad	0.0002131 rad

Output Preview

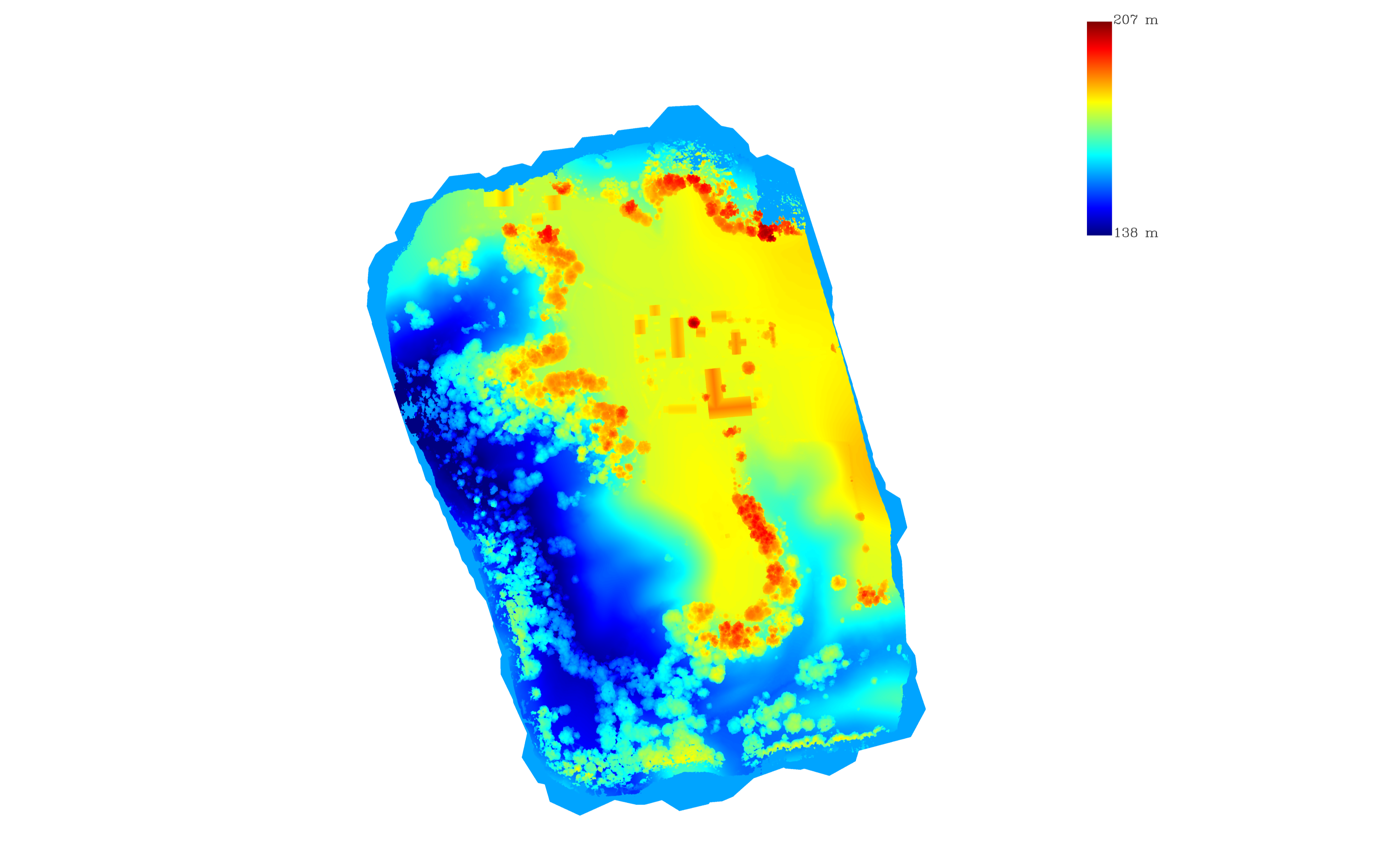
TDOM Preview



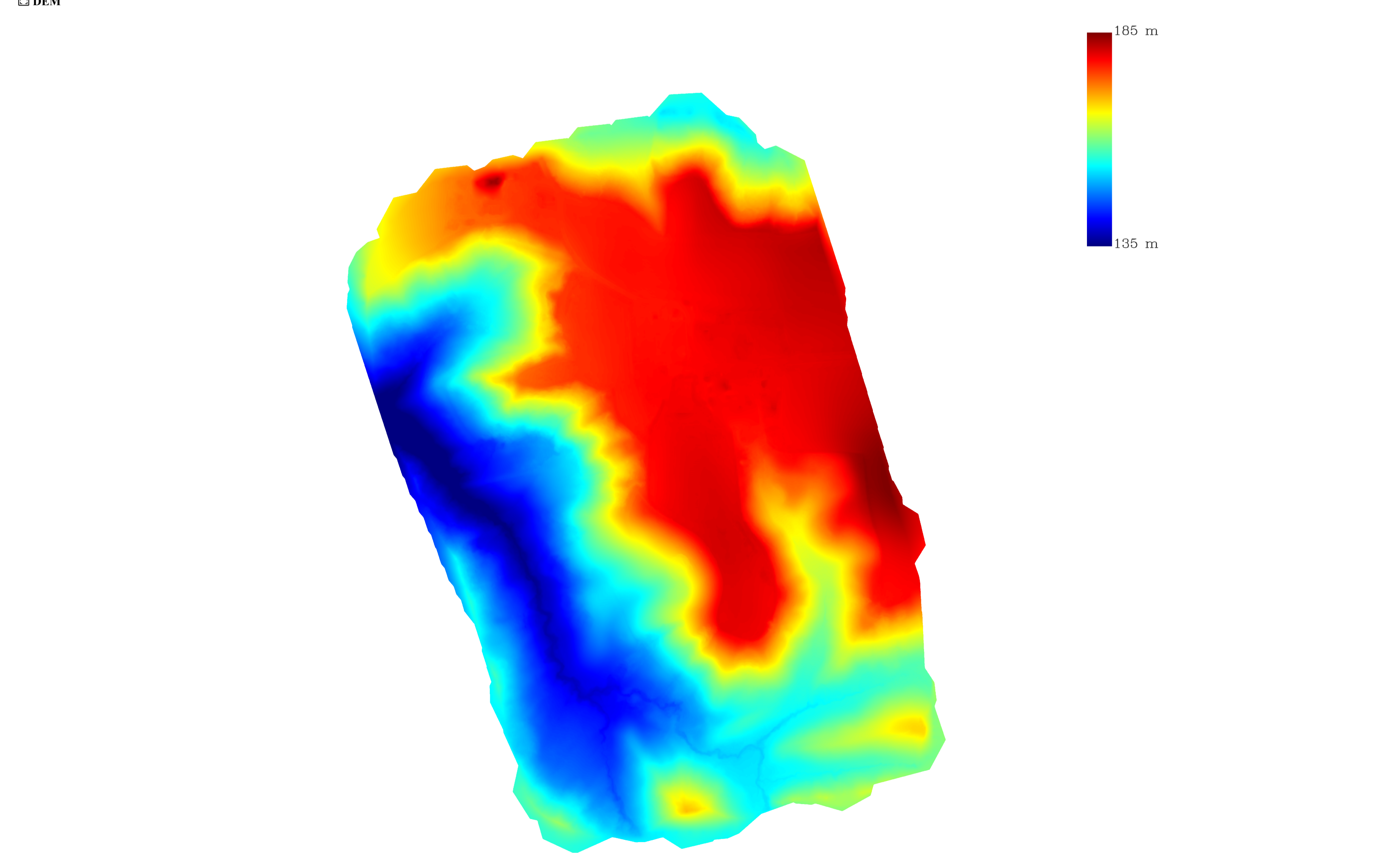
Scene Overlapping



DSM Preview



DEM



Output Parameters

Point Cloud Density

Scale	Point Cloud Average Density	Point Cloud Standard Density	Grid Side Length	Total Grid Number	Non-conforming Grid Ratio
1:500	1441points/m²	16points/m²	0.25 m	2543328	0.99%
1:1000	1441points/m²	4points/m²	0.5 m	644420	0.87%
1:2000	1441points/m²	1points/m²	1 m	161876	0.94%

Output List

Point Cloud | PNIS | LAS

DEM | GeoTIFF