

CSRS-PPP 3.54.2 (2022-11-10)



DRTK2_Fjugstad.obs
0000

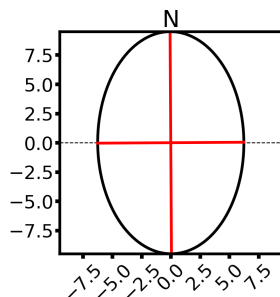
Data Start		Data End	Duration of Observations
2024-02-05 09:59:00.00		2024-02-05 13:56:00.00	3:57:00
Processing Time		Product Type	
10:51:33 UTC 2024/03/15		NRCan/IGS Final	
Observations		Frequency	Mode
Phase and Code		Double	Static
Elevation Cut-Off	Rejected Epochs	Fixed Ambiguities	Estimation Steps
7.5 degrees	0.00 %	83.68 %	30.00 sec
Antenna Model	APC to ARP	ARP to Marker	
ADVNULLANTENNA	Unknown	H:0.000m / E:0.000m / N:0.000m	

(APC = antenna phase center; ARP = antenna reference point)

Estimated Position for DRTK2_Fjugstad.obs

	Latitude (+n)	Longitude (+e)	Ell. Height
ITRF20 (2024.1)	59° 21' 49.16513"	10° 27' 10.30385"	90.005 m
Sigmas(95%)	0.008 m	0.005 m	0.022 m
A priori*	59° 21' 49.13238"	10° 27' 10.40616"	86.551 m
Estimated – A priori	1.013 m	-1.616 m	3.454 m

95% Error Ellipse (mm)
 semi-major: 9 mm
 semi-minor: 6 mm
 semi-major azimuth: 0° 38' 4.16"



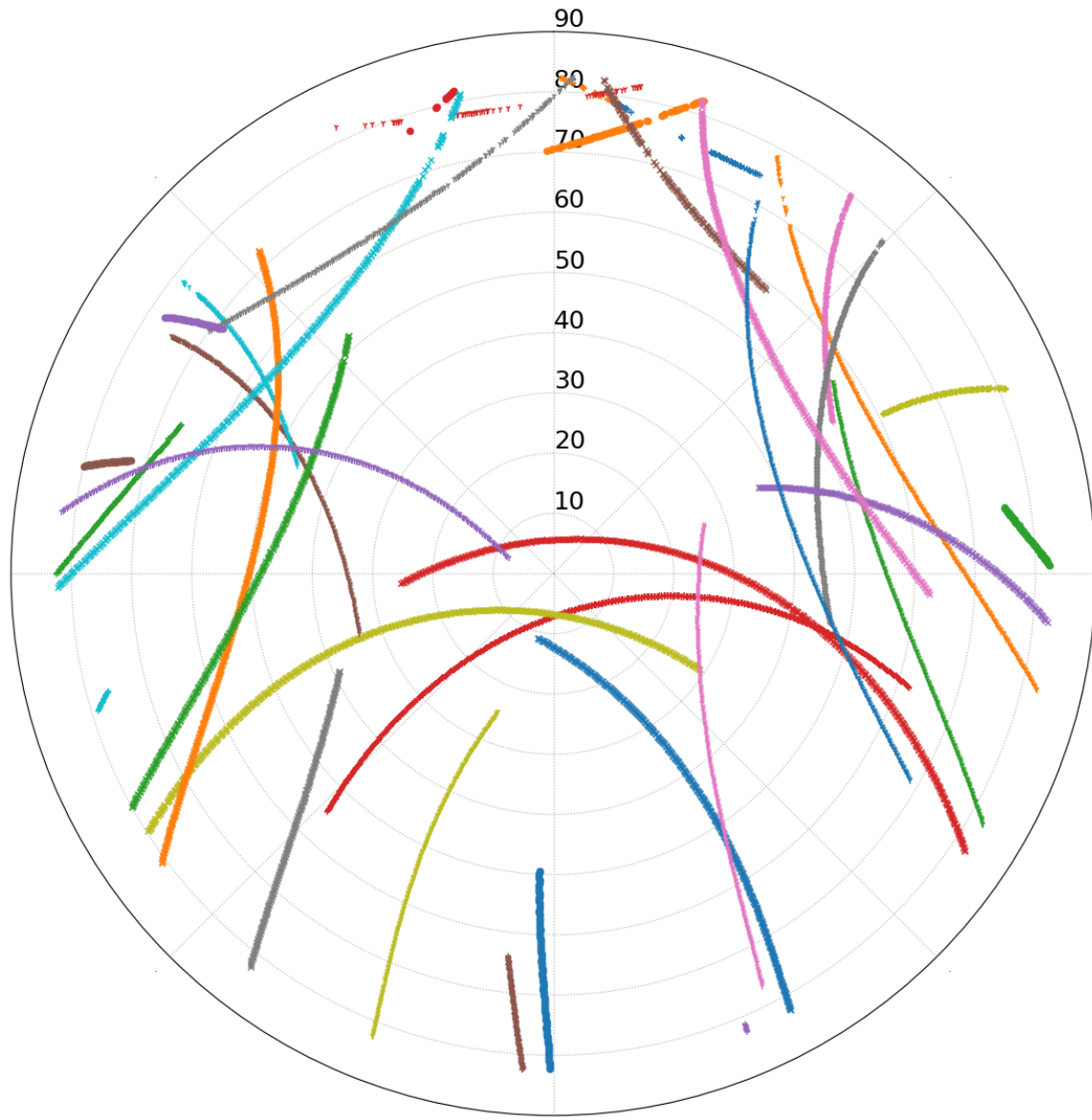
UTM (North)
Zone 32

6581447.549 m (N)
582584.200 m (E)

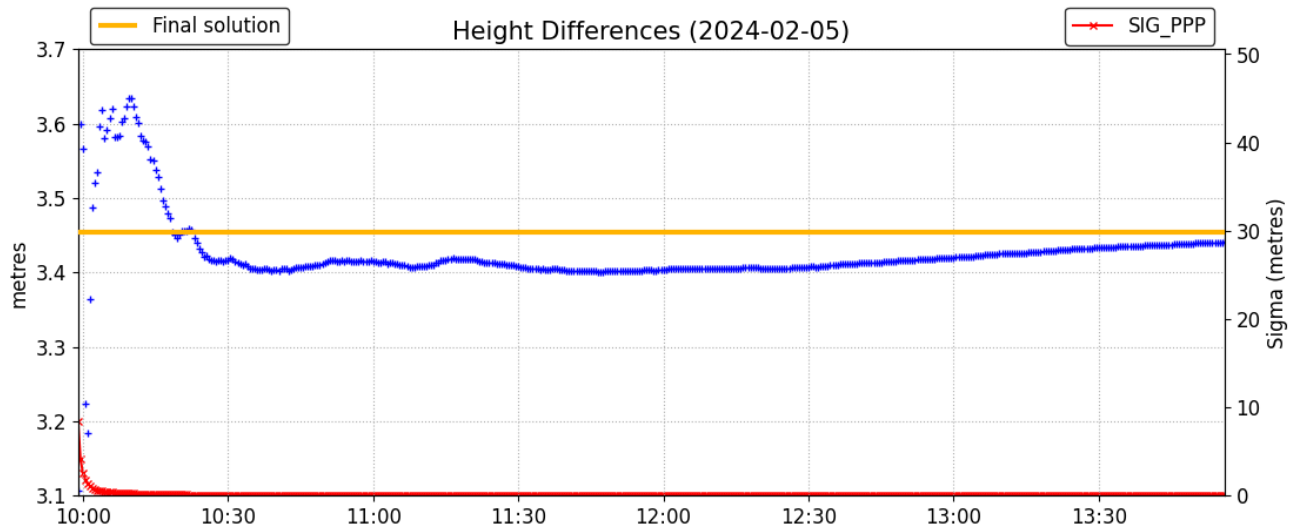
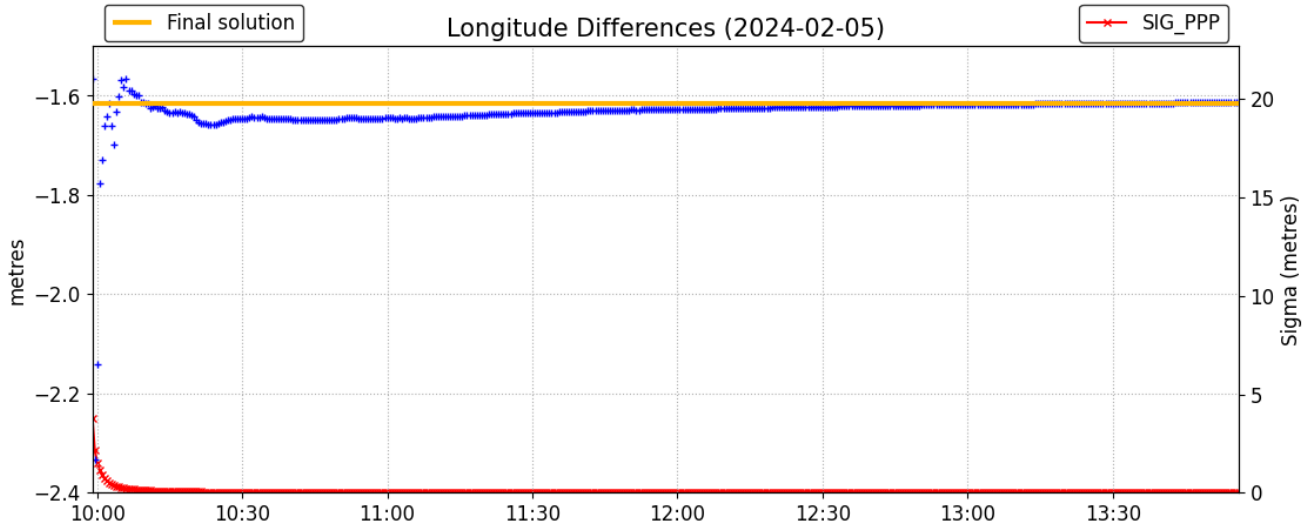
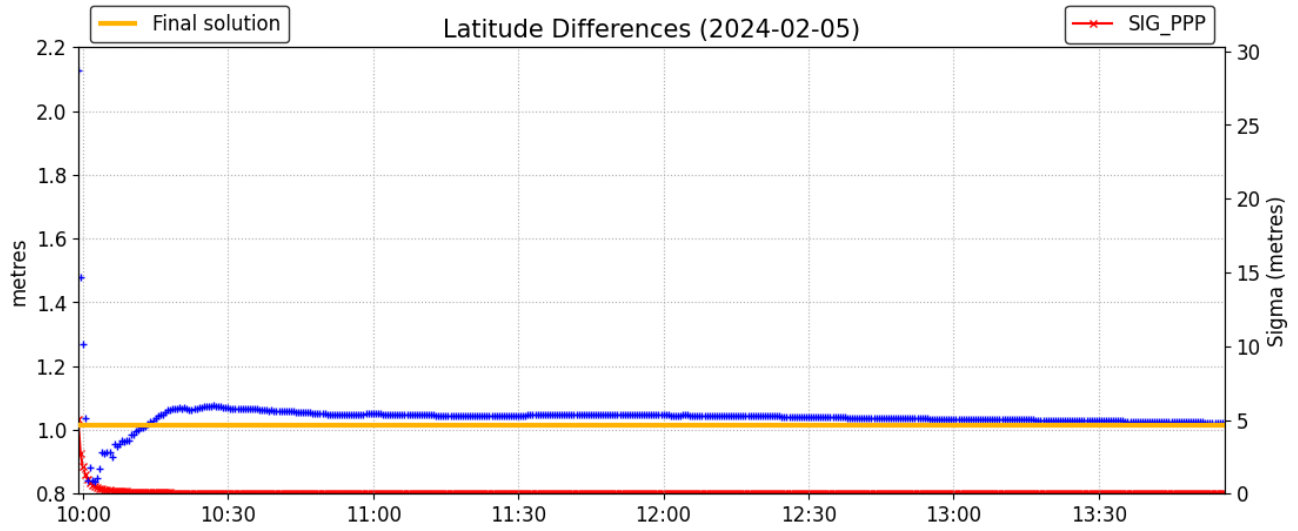
Scale Factors
0.99968359 (point)
0.99966951 (combined)

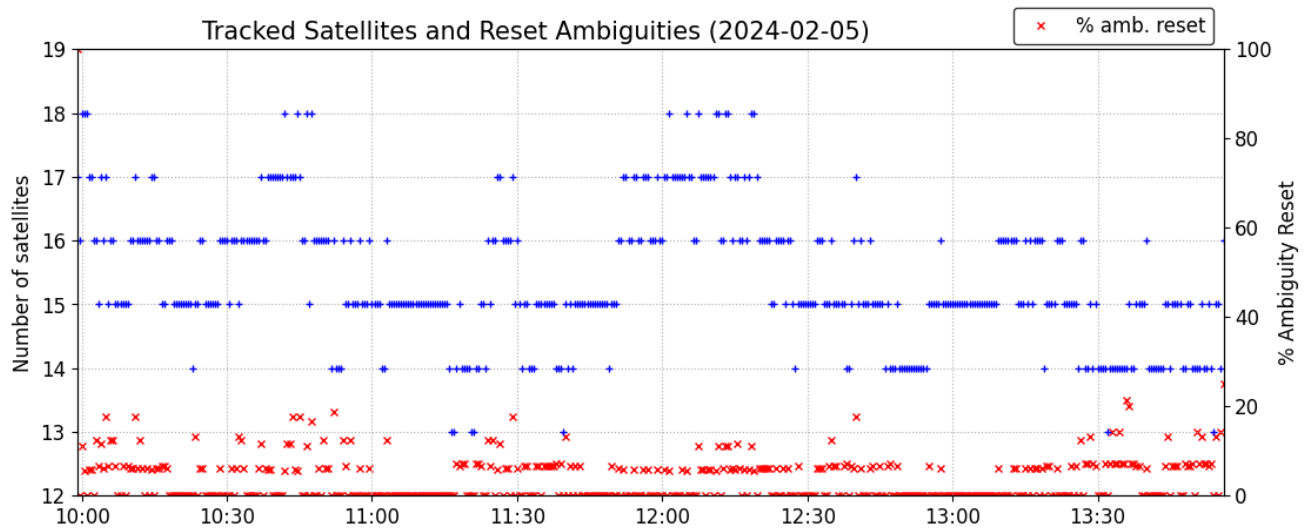
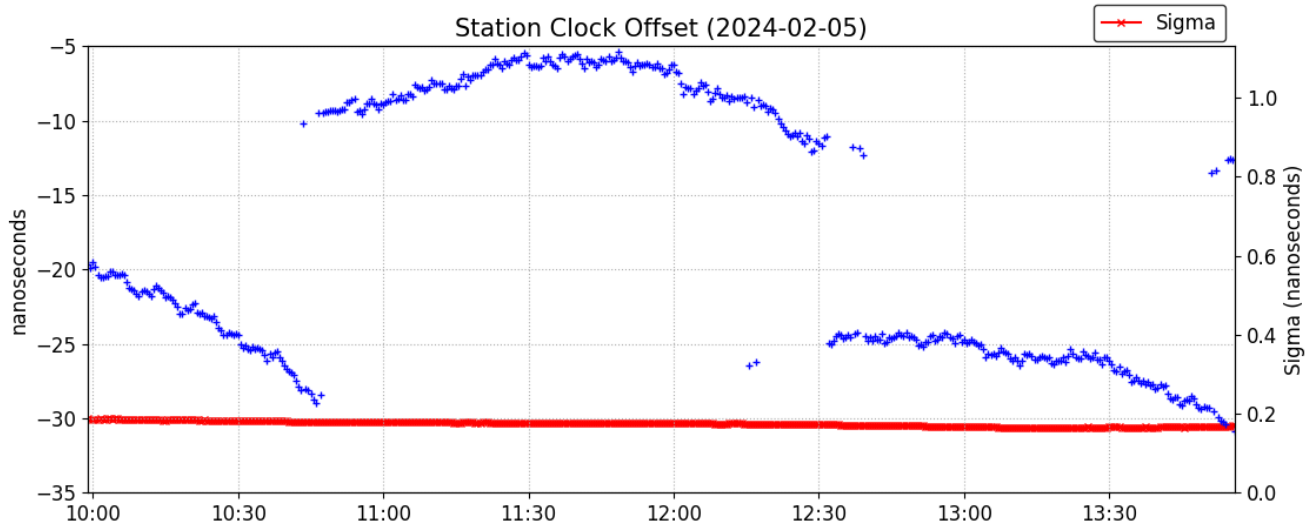
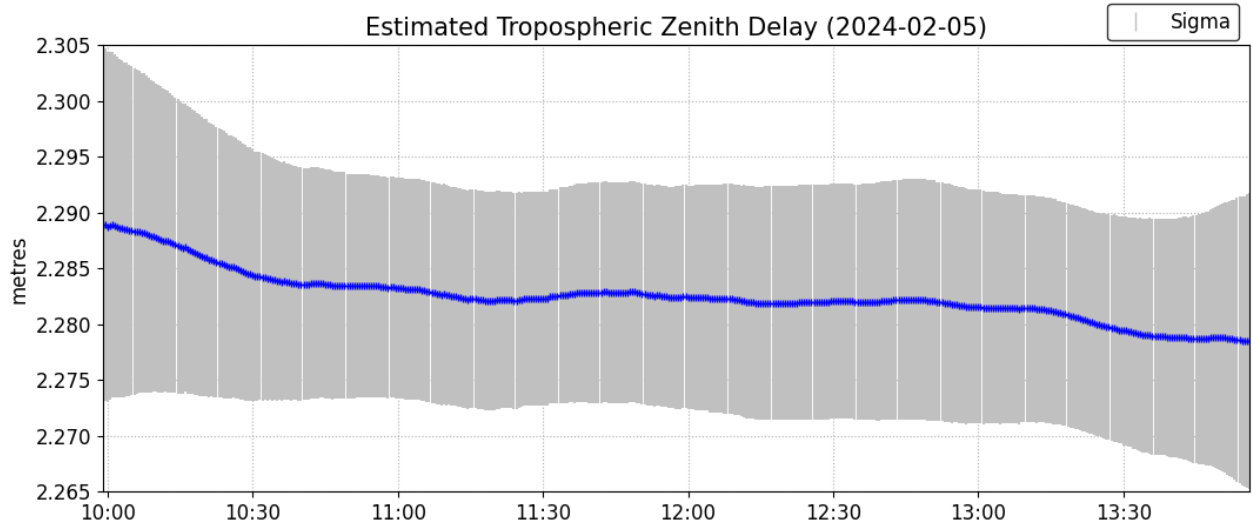
*(Coordinates from RINEX header used as a priori position)

Satellite Sky Distribution

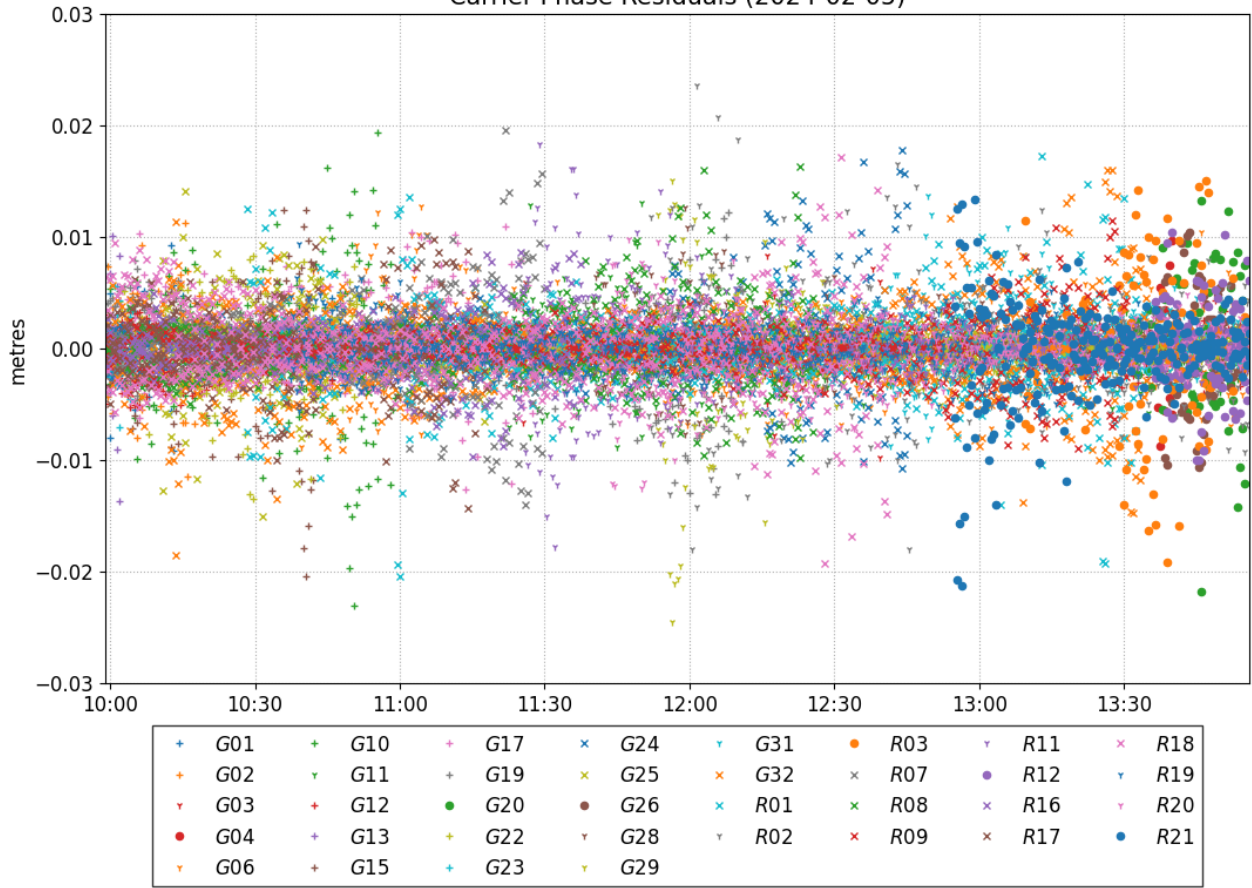


+	G01	▽	G11	●	G20	▽	G28	●	R03	×	R16
+	G02	+	G12	+	G22	▽	G29	×	R07	×	R17
▽	G03	+	G13	+	G23	▽	G31	×	R08	×	R18
●	G04	+	G15	×	G24	×	G32	×	R09	▽	R19
▽	G06	+	G17	×	G25	×	R01	▽	R11	▽	R20
+	G10	+	G19	●	G26	▽	R02	●	R12	●	R21

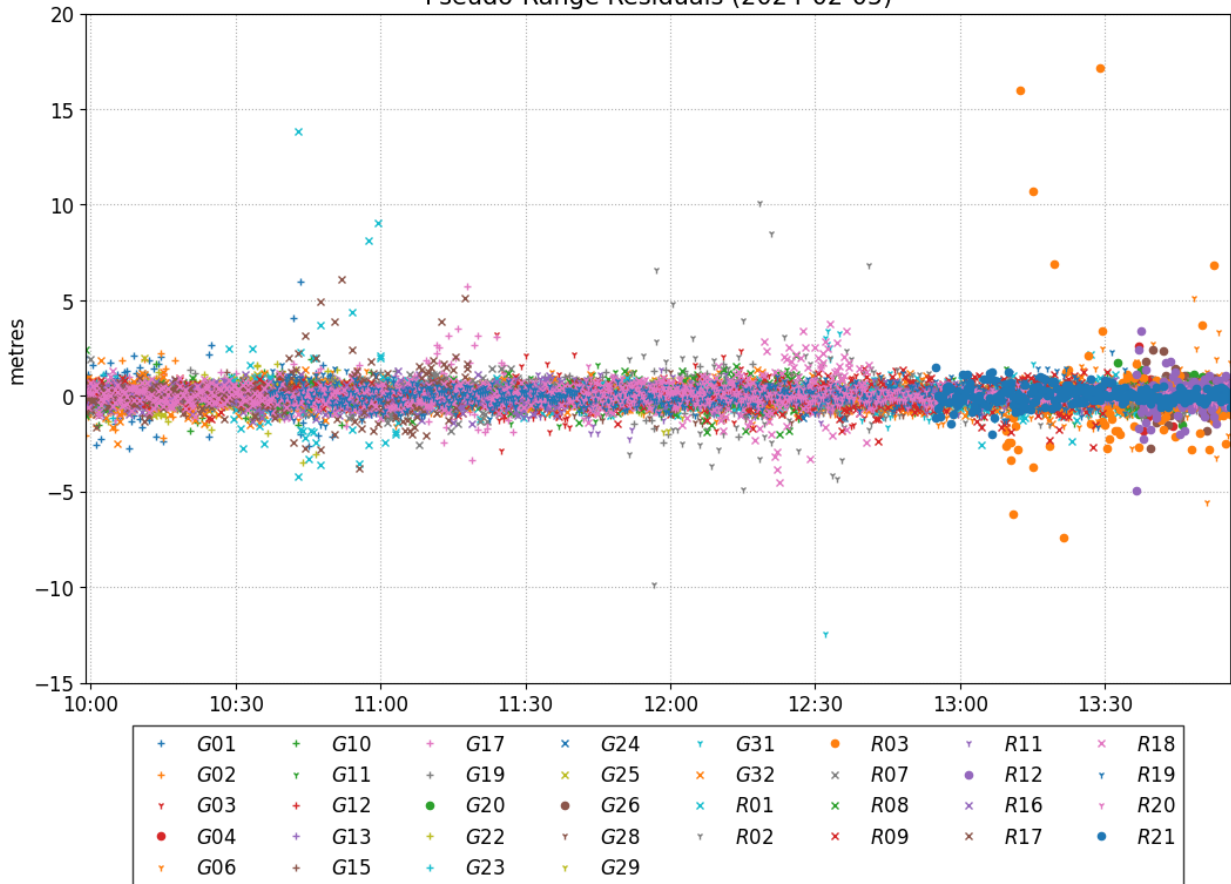




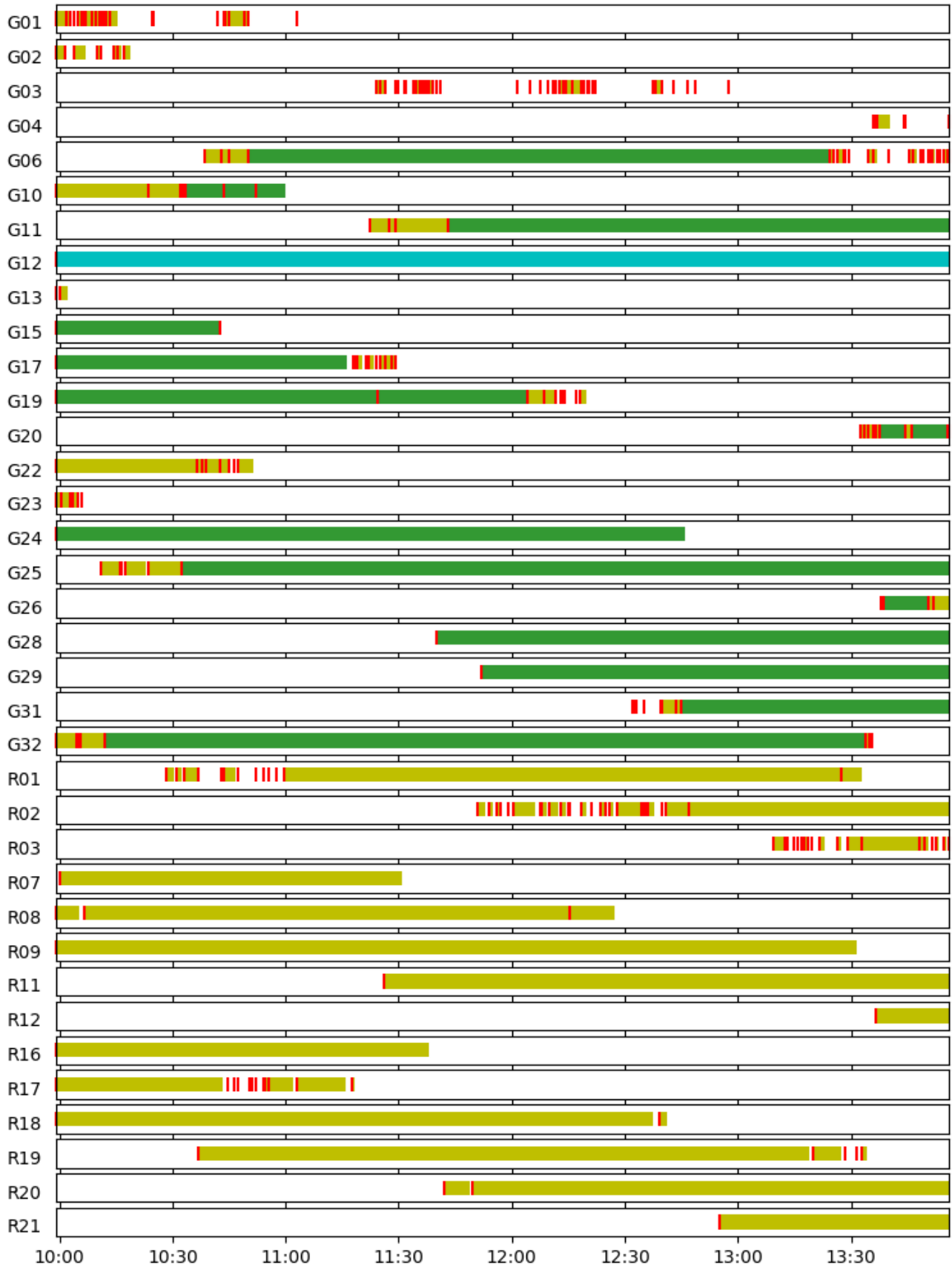
Carrier-Phase Residuals (2024-02-05)



Pseudo-Range Residuals (2024-02-05)



Phase Ambiguity Status (2024-02-05)



~~~ Disclaimer ~~~

Natural Resources Canada does not assume any liability deemed to have been caused directly or indirectly by any content of its CSRS-PPP online positioning service.

**Use of Canadian Geodetic Survey products and data is subject to the
Open Government Licence - Canada**

If you have any questions, please feel free to contact:

Canadian Geodetic Survey

Natural Resources Canada

Ottawa, Ontario, Canada

Email: geodeticinformation-informationgeodesique@nrcan-rncan.gc.ca



**Natural Resources
Canada**

**Ressources naturelles
Canada**

Canada